

The average co-payment depends on the level of the hospital and the profile of the disease.

- ▼ In urban and regional hospitals the co-payment amount is as follows:
 - 840 soms (therapeutic profile)
 - 1 090 soms (surgical profile).
- ▼ In National Centres the co-payment amount is as follows:
 - 1 160 soms (therapeutic profile)
 - 1 510 soms (surgical profile).

In the absence of a family doctor's referral for planned hospitalisation, the maximum co-payment (from 8 400 soms to 14 310 soms) is paid



IMPORTANT!

- ▼ Have a referral from your family doctor for hospitalisation, except in emergencies.
- ▼ Emergency (ambulance) medical care is provided free of charge until removal from a life-threatening condition.
- ▼ Medical services in hospitals, except for high-tech services, are provided without additional payment.
- ▼ Foreign students who are not insured under MHI pay for medical services according to the Price List for Foreign Citizens.

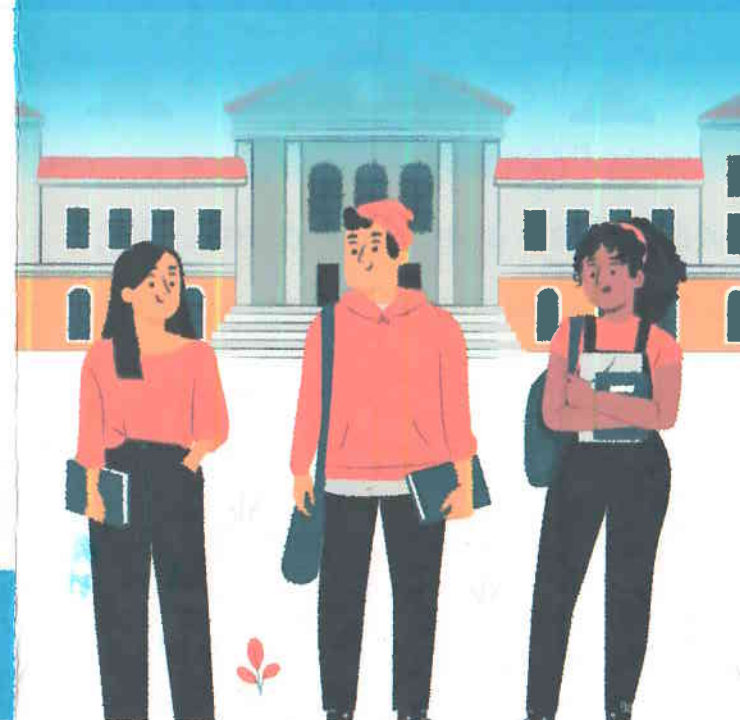
MHI does not pay for medical services provided to students in health insurance organizations.



KYRGYZ REPUBLIC
MANDATORY HEALTH
INSURANCE FUND

BEING INSURED IS BENEFICIAL!

Medical services under the State Guarantee Programme for insured foreign students in the Kyrgyz Republic



Medical services at the Centre for Family Medicine

For free:

- ✓ examination, consultation with specialists, prescription of treatment;
- ✓ vaccinations;
- ✓ injection procedure (without providing medicines and syringes);
- ✓ carrying out basic analyses and tests (12 types);
- ✓ additional analyses and tests (40);
- ✓ medical examination once a year.

Any questions?

Call **113**

a 24-hour hotline of the MHI Fund

On preferential terms:

50 % for rehabilitation, physiotherapy, day hospital services (without provision of medicines, systems and syringes).

Up to 50% for other diseases according to the Handbook of MHIF.

Important!

- ▼ To be assigned to a family doctor at the place of residence (passport required for assignment).
- ▼ Obtain an MHI policy.
- ▼ Have a referral from a family doctor.

Medical services in state general-profile hospitals

When making a mid-level co-payment, the following is provided:

01.

Hospitalisation, treatment and operations under anaesthesia.

02.

Conducting tests and investigations.

03.

Provision of medicines and medical devices.

